



TEST AND RESET

🕒 12:42

This ethereal composition transports listeners to a lush, verdant jungle where they can rest and recharge. Soft, comforting synth pads and a gentle lullaby of melodic bells lull the listener into a state of tranquility, while the natural sounds of the jungle provide a grounding presence. Whether you need a moment of calm in the midst of a busy day or a way to unwind after a long week, this short track is the perfect oasis of serenity.



ENERGY AND FOCUS

🕒 33:00

This invigorating track is a shot of sonic espresso, providing the listener with a rush of motivation and concentration. Rhythmic synths pulse with energy, dynamic pad swells surge with excitement, and energizing grooves propel the listener forward with unstoppable momentum. When it comes time to focus or prepare for something important, this track, with binaural beats in the gamma range, will give you the boost you need to tackle anything that comes your way.



EMOTIONAL HEALING

🕒 23:03

Like a journey through the depths of the soul, this hauntingly beautiful track is a powerful tool for healing and release. Night forest sounds create an immersive, atmospheric backdrop, while ethereal chant harmonies and emotive melodies guide the listener through a cathartic process of emotional healing. Whether you're grappling with grief, anxiety, or any other difficult emotion, this track, with binaural beats in the theta range, will help you confront and release those feelings in a safe, supportive space.



LIFE PULSE

🕒 28:22

With a heart-pumping beat that echoes the rhythm of a human heartbeat, this pulse-pounding track is the ultimate energy booster. Energetic jungle sounds and swirling pulses combine to create a dynamic, invigorating soundscape that will get your blood pumping and your body moving. Whether you're in need of a body reboot or just need to shake off some lethargy, this track will give you the flow and vitality you need to tackle anything.



HARMONIC UNIVERSE

🕒 30:29

Embark on a cosmic journey through the stars with this mystical and enchanting track. Swirling tones and heavenly wonder create a sense of awe and transcendence, transporting the listener to a realm beyond the limits of the mundane world. Whether you're seeking inspiration, relaxation, or simply a moment of wonder and awe, this track will transport you to another realm.



REST AND RELAX

🕒 23:06

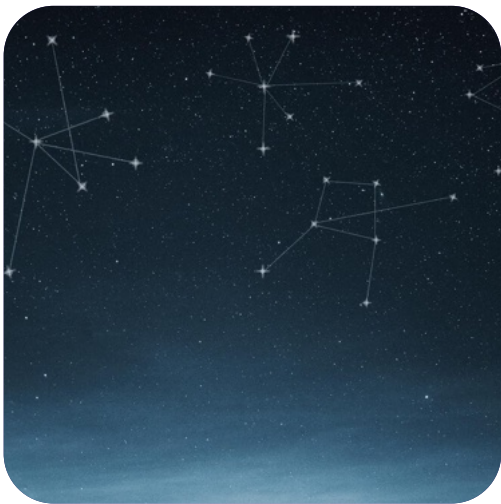
Like a sonic spa for the soul, this deeply relaxing track is the perfect way to unwind and rejuvenate. Soft, soothing synth pads and gentle melodies create a sense of peace and tranquility, while a meditative vibe helps to quiet the mind and release tension. Whether you need to take a break from the stresses of everyday life or just want to tune out and connect with your inner self, this track, with binaural beats in the alpha range, will help you find the inner calm you crave.



THE FOUR ELEMENTS

🕒 26:22

Take a meditative journey through the four elements of nature -earth, air, water, and fire -with this immersive and enchanting track. Each element is represented by its own unique set of nature sounds, creating a visceral and immersive experience that will ground you in the natural world. Whether you're seeking a moment of grounding and centering or simply want to connect with the elemental forces that govern our world, this track will transport you to a realm of natural wonder and beauty.



CELESTIAL NAVIGATION

🕒 17:02

A mesmerizing electronic journey that invites the listener on a sonic odyssey. The track contains lush, evocative soundscapes, melodic themes. Tuned to the $a = 432\text{Hz}$ frequency, this session resonates with the natural harmonics of the universe, promoting a sense of balance, tranquility, and inner harmony. Celestial navigation is the perfect soundtrack for preparing the mind for studying, working, or engaging in any activity that requires heightened mental focus and clarity, offering a transcendent tool for exploring the far reaches of the mind and unlocking the full potential of the brain. It has a dynamic gamma binaural beat program designed to enhance cognitive function and mental acuity.



RED

🕒 20:06

This track is infused with the vibrant energy of the color red, evoking a sense of passion, vitality, and courage. In the key of C, red helps you tap into your inner fire, igniting a sense of purpose and drive. Binaural beats in the theta range guide you into a meditative state, while the rich, textured soundscape of the track stimulates the senses.



ORANGE

🕒 19:57

This track embodies the warmth and vibrancy of the color orange, inspiring a sense of joy, creativity, and playfulness. In the key of D, orange encourages you to let go of your inhibitions and embrace your inner child. Binaural beats in the theta range facilitate a relaxed, dreamy state, while the uplifting melodies and playful rhythms of the track evoke a sense of wonder and delight.



YELLOW

🕒 19:59

This track channels the sunny, uplifting energy of the color yellow, inviting a sense of clarity, optimism, and confidence. In the key of E, yellow helps you feel more centered and focused, clearing away mental fog and restoring a sense of purpose. Binaural beats in the theta range deepen your relaxation, while the bright, sparkling soundscape of the track evokes the freshness and vitality of a bright summer day.



GREEN

🕒 20:02

This track embodies the lush, verdant energy of the color green, evoking a sense of growth, renewal, and harmony. In the key of F, green helps you feel more connected to nature and more attuned to your body's rhythms. Binaural beats in the theta range enhance your state of relaxation, while the rich, textured soundscape of the track evokes the soothing embrace of a verdant forest.



BLUE

🕒 20:00

This track captures the deep, mysterious energy of the color blue, evoking a sense of introspection, tranquility, and wisdom. In the key of C, blue invites you to dive into the depths of your inner world, exploring your thoughts, feelings, and dreams. Binaural beats in the theta range deepen your meditation, while the haunting, ethereal soundscape of the track evokes the vastness and mystery of the ocean.



PURPLE

🕒 19:00

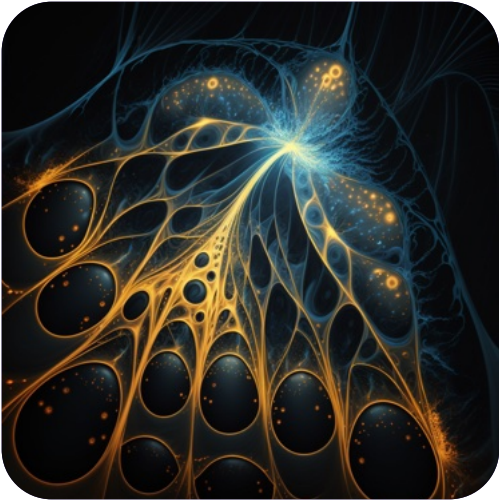
This track embodies the regal, mystical energy of the color purple, inspiring a sense of spirituality, intuition, and transcendence. In the key of A, purple invites you to connect with your higher self, accessing your inner wisdom and guidance. Binaural beats in the theta range deepen your trance state, while the ethereal, otherworldly soundscape of the track evokes a sense of awe and wonder.



CLEAR LIGHT

🕒 23:04

This track embodies the pure, radiant energy of clear light, inviting a sense of clarity, purity, and transcendence. In the key of B, clear light invites you to let go of all distractions and enter a state of pure presence. Binaural beats in the theta range facilitate a deep state of relaxation, while the crystalline, celestial soundscape of the track evokes the spaciousness and purity of the cosmos.



WISDOM WITHIN

🕒 30:33

Immerse yourself in the blissful resonance of the 40 hz gamma frequency with this thoughtfully designed binaural beats track, crafted for those embarking on a journey to uncover their inner wisdom. enveloping you in a symphony of instruments, ethereal voices, and echoes of ancestral guidance, this captivating fusion of energy and ambiance gently guides you into the role of the attentive student, granting you access to the profound depths of wisdom nestled within your being.



HEALING FREQUENCY CODES - 222 HZ

🕒 27:27

Centered around the frequency of 222 hz, this transformative track offers an immersive journey aimed at dissolving the ego and facilitating profound healing of the body and mind. Drawing inspiration from the serene sounds of nature to gently relax the body, and punctuated by powerful crescendos that dissolve the boundaries of the ego, this composition serves as a conduit to reconnect with the source. as you listen, you are invited to remember that you are not merely the seeker of healing, but the very embodiment of the healing energy itself.